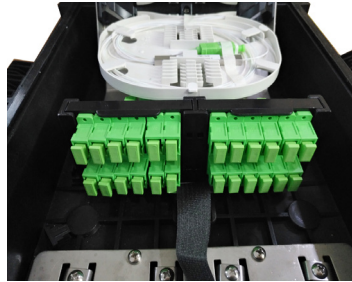
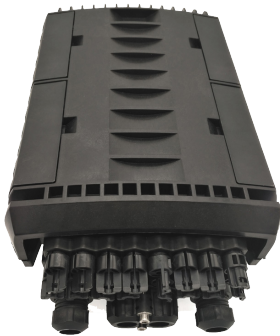


FDB0216F FIBER OPTIC TERMINATION BOX



FTTH drop cable type fiber optic splice & splitter closure features with ruggedness, which is tested under harsh conditions and stand up to even the most severe conditions of moisture, vibration and extreme temperatures. Humanized design help user get better experience.

FEATURE

Feature
Dis-mountable adaptor panel
Support midspan termination
Easy operation and installation
Rotable and dis-mountable splice tray for easy splicing
Outdoor wall mounting and pole mounting
2x3mm indoor ftth drop cable and outdoor figure 8 ftth drop cable

APPLICATION

Outdoor wall mounting, pole mounting, pipe-lined
2*3.0mm indoor FTTH drop cable and outdoor
figure 8 FTTH drop cable

TECHNICAL SPECIFICATION

Model	FDB0216F		FDB0224F		FDB0224G
Dimension(mm)	385*245*130		385*245*155		385*245*130
Cable ports	1uncut port	2round ports	1uncut port	2round ports	1uncut port
Applicable cable dia- meter (mm)	10-17.5	8-17.5	10-17.5	8-17.5	10-17.5
Drop cable ports	16ports		24ports		24ports
Applicable cable	2*3mm ftth drop cable, 2*5mm figure 8 ftth drop cable				
Maximum Splicing	144/72 fibers (6 trays, 12/24 fibers/tray)				
Applicable Splitter	1x 1*16 (PLC) ; 2x (1*8 (PLC)				
Impact Test	IK10				
Pull-force	100N				
Mid-span Entry	yes				
Storage (Tube/Micro Cable)	yes				
Material	Modified polymer plastic				
Color	Black				
Net weight	4kgs				
Packaging	540*410*375mm (4pcs per carton)				

